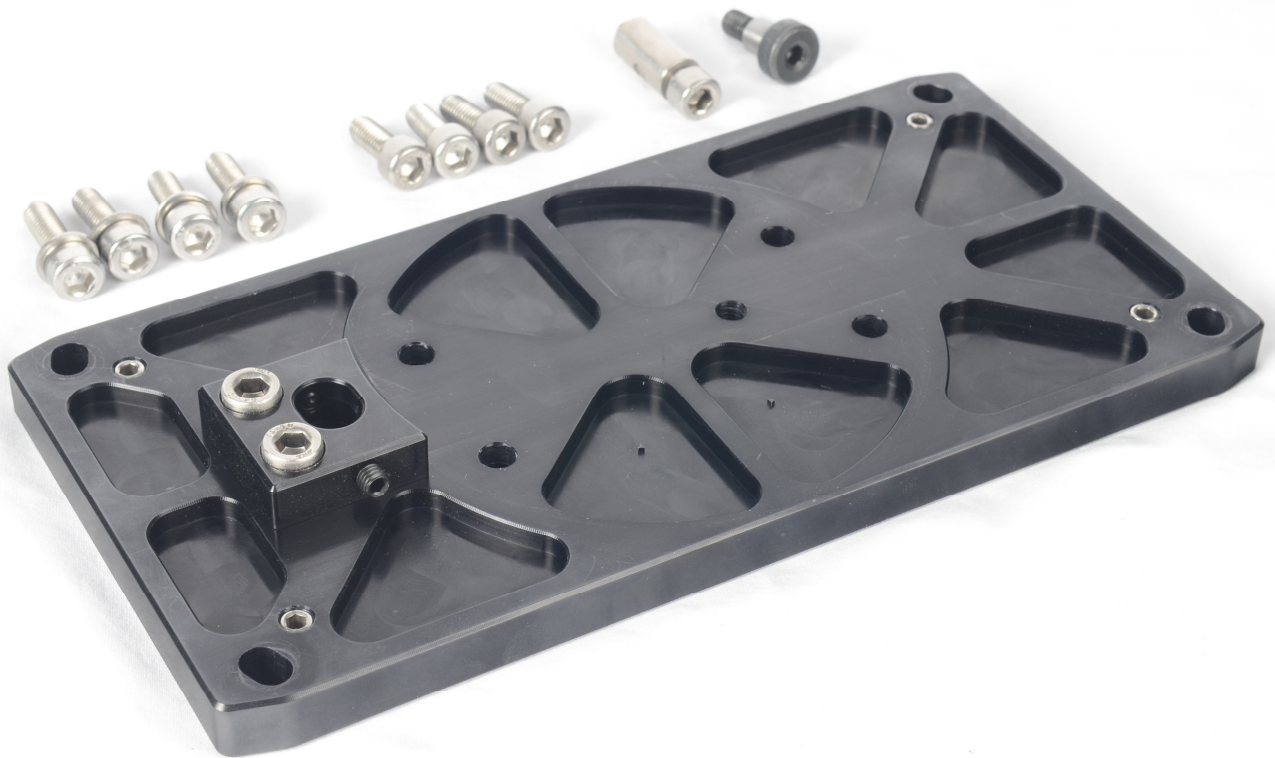




AZ100 Altitude Adjuster.

The alignment kit contains:-

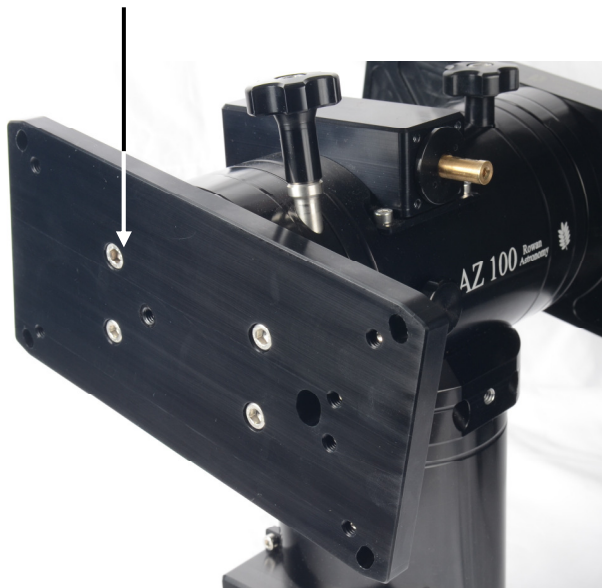
- 1 x Alignment plate
- 4 x M6 x 16 cap head bolts
- 4 x M6 x 20 cap head bolts with washers
- 1 x shoulder bolt pivot
- 1 x reaction pin with M6 x 30
- 1 x Reaction block (fitted to plate)
- 4 x M6 x 12 flat grub screws (in plate)
- 2 x M6 x 12 bolt (in reaction block)
- 2 x M5 grub screw (in reaction block)



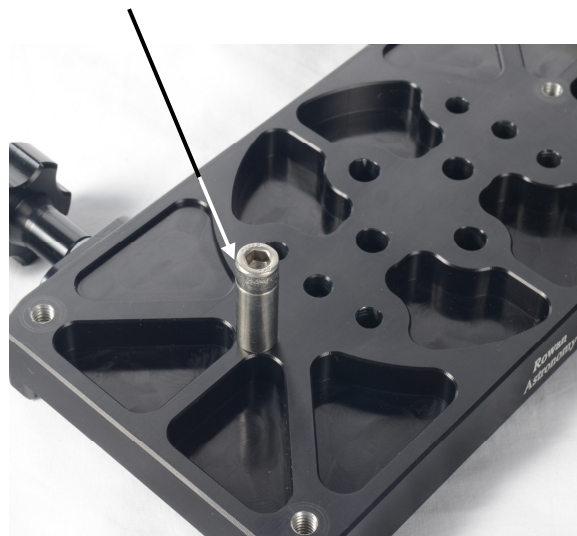
Rowan Astronomy
Rowan Engineering Ltd.
Unit 8 Overfield
Banbury
Oxon
OX16 4XR
+44 (0)1295 251188
www.rowanastronomy.com
sales@rowanastronomy.com

1) To fit the plate to the AZ100, remove the saddle or counterweight shaft and flange from the side you wish to add the alignment. Normally the alignment is fitted to the smaller secondary telescope.

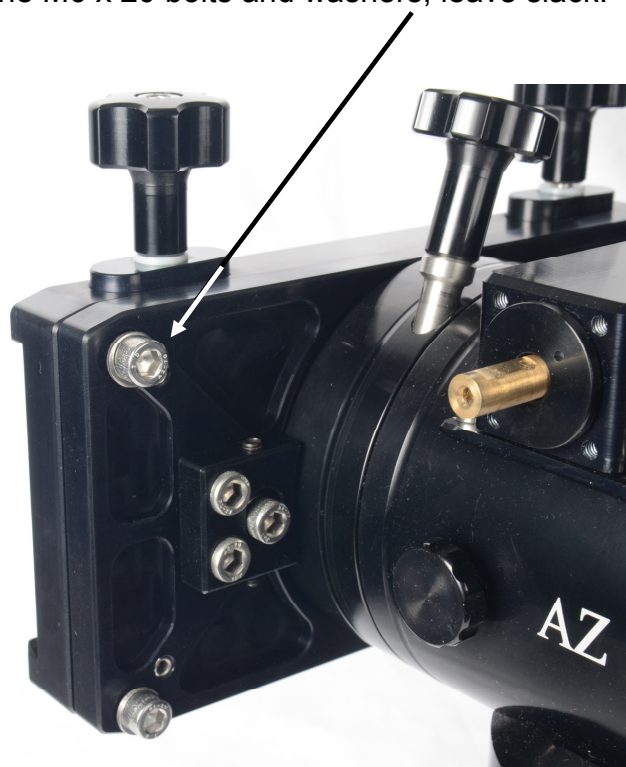
2) Attach the alignment plate to the axis of the AZ100 using the 4 x M6 x 16 cap head bolts.



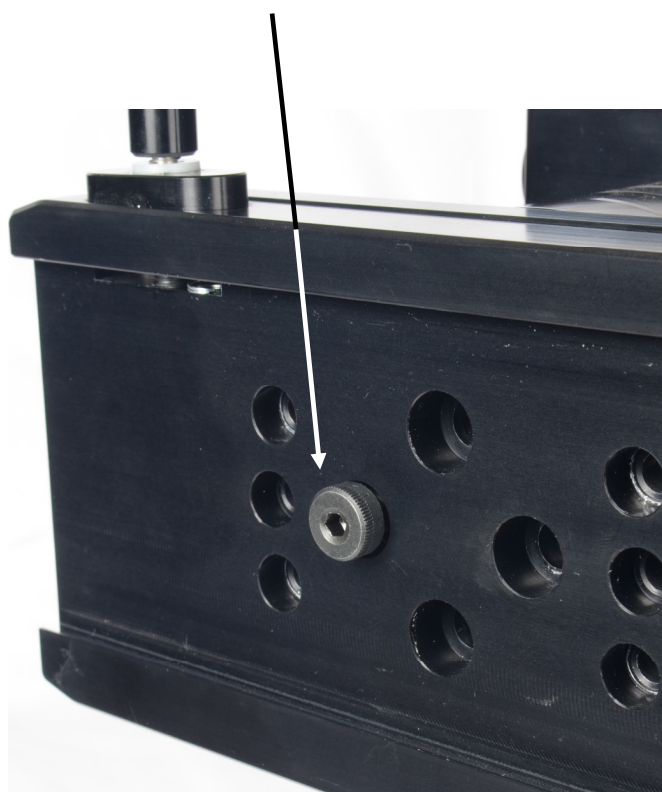
3) Fit the reaction pin to the rear of the saddle.



4) Fit the saddle to the adjustment plate with the M6 x 20 bolts and washers, leave slack.

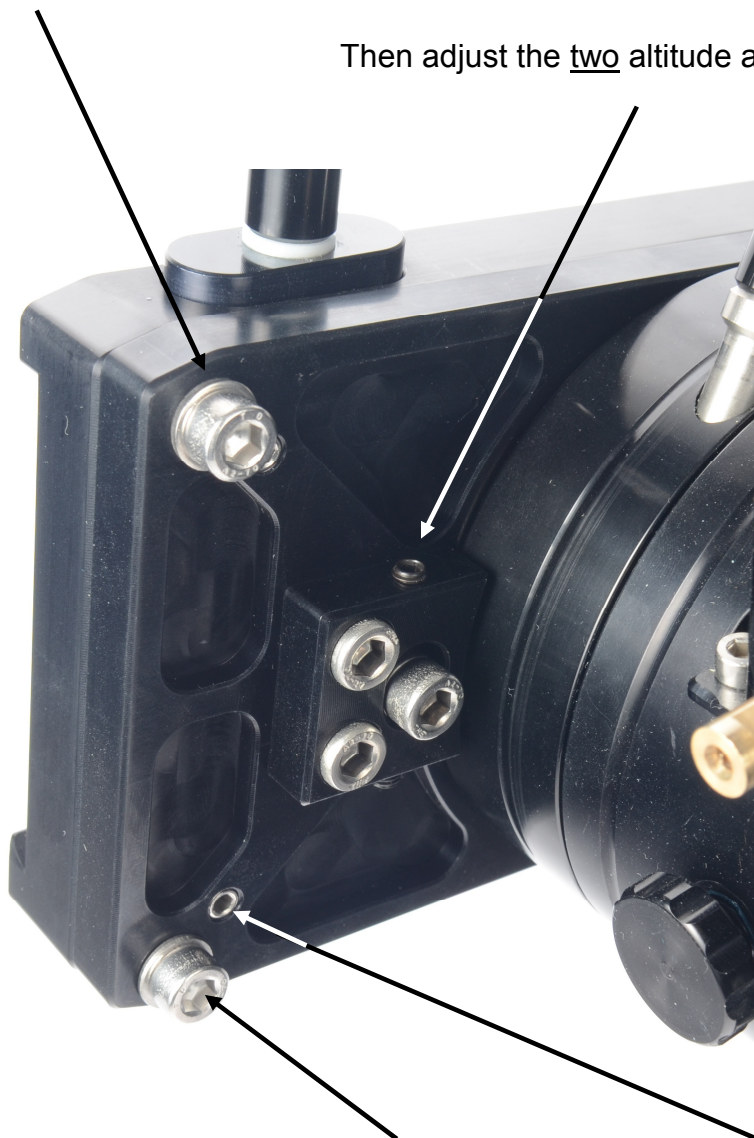


5) Fit the shoulder bolt pivot.



6) To make altitude alignment adjustment, 'slightly slacken' the 4x M6 bolts.

Then adjust the two altitude adjustment grub screws.



Slight adjustment in azimuth is also possible by adjusting the 4 x grub screws on the corner of the adjustment plate. This has to be done in co-ordination of the M6 bolts.

For further information or advice about using or adjusting the AZ100 please e-mail Rowan Astronomy at sales@rowanastronomy.com or contact us on our office number +44 (0) 1295 251188

A .pdf version of this instruction sheet with higher resolution photos is available in the support section of www.rowanastronomy.com